

# EXTREME ENGINEERING SOLUTIONS LIMITED

COMPANY PROFILE

LOYALTY

COMMITMENT

INTEGRITY

ROBUSTNESS



- ✓ Pavement Design, Evaluation and analysis ✓ Highway Design
- ✓ Value Engineering ✓ Surveying ✓ Geotechnical investigations
- ✓ Bridge Design ✓ Environmental and Social Impact Assessment
- ✓ Forensic Investigation ✓ Construction claim expert

## THE FIRM

Extreme Engineering solutions Limited (EES) is an Engineering Consulting firm registered in Rwanda in 2018. EES has its registered offices located in Nyarugenge, Kigali. Extreme Engineering Solutions is a Subordinate company of Advanced Engineering solution Ltd of Tanzania with address; Plot No 144, Mkiocheneni B, Off Old-Bagamoyo Road, House NO MKC/MCB/813, Ng'ambo Road/ Wastaafu No.10, P.O.BOX 19074, Dar es Salaam, Tanzania.

**EES** Organization is structured so as to service better our growing number of our client. Our operation system is updated regularly so as to improve our services and to ensure that our customers are getting the best out of our services. EES operates in various countries mainly as sub consultant drawing on the intergrated global experince of the firm's and personel. EES provides multi-displinary consultancy services for all stages of a project cycle from preparation and feasibility study to construction, operation and maintanance and capacity building.

Our experience covers wide range of topographical, climatic, cultural and working enviromentals. We are able to mobilise quickly and work effieciently in difficult circumstances with limited facilities. Our combination of specialist staff expertise and development project experience has proved particularly appropriate in all area of east Africa i.e Tanzania, Uganda, Rwanda, Ethiopia, Malawi, Zambia.

In order to ensure that our projects are executed on time, our operation is structured as shown in flow chart below.



## OUR CORE VALUES

Our values define who we are. They are the fundamental beliefs of our global organization. They guide our actions and behaviour. They influence the way we work with each other – and the way we serve our clients.

Every day, each one of us makes choices and decisions that directly affect the way we experience each other and the way our clients experience us. Our values give us confidence that we are using the same principles to help us make these decisions throughout our organization.



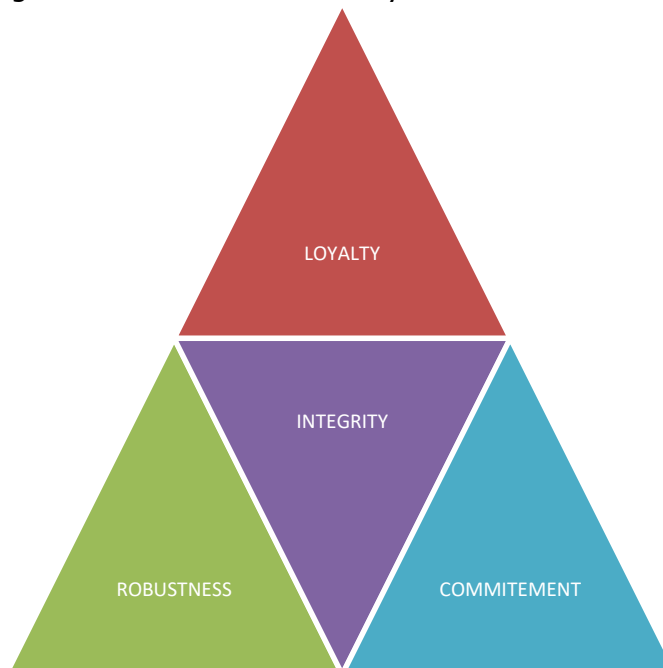
- ✓ Pavement Design, Evaluation and analysis ✓ Highway Design
- ✓ Value Engineering ✓ Surveying ✓ Geotechnical investigations
- ✓ Bridge Design ✓ Environmental and Social Impact Assessment
- ✓ Forensic Investigation ✓ Construction claim expert

**INTEGRITY:** Integrity always comes first. Honesty, truthfulness, and sincerity are all values we hold at the forefront. We inspire trust in each other and our clients by saying what we mean, matching our behaviours to our words, and taking responsibility for our actions. We are always fair and ethical even in the most difficult situations.

**LOYALTY:** At EES, we build positive, long-term relationships with our clients, partners, vendors, and colleagues that are built on trust, respect, and collaboration.

**COMMITMENT:** We never let down any of our clients and partners. We are committed to satisfying the client by always being there. We maintain close communication with all of our clients throughout the whole project life.

**ROBUSTNESS:** EES is the fastest growing consultancy firm in Rwanda. With a life less than a decade, EES is among the elite consultancies in Rwanda delivering quality engineering services which brings solutions to the community.



#### COURSES

To maintain technical expertise with current technology and engineering methods EES sends its staff on various courses throughout the year. We have special program to make sure that all senior staff are possessing a post graduate qualification, two staff are sponsored for Master program. We believe that by enabling our staff to increase their knowledge and skill, they will easily achieve their full potential in the work place.

#### IN-SERVICE TRAINING

Throughout the year, technician and engineers are given an opportunity to complete their in-service training and practical training for students. These junior Technicians and Engineer are normally taught by some of EES most experienced staff members to give their carrier a jump start.

#### ASSOCIATIONS

EES is a member of accredited and recognized bodies and institution in Rwanda. Currently EES is a member in of the following



✓ Pavement Design, Evaluation and analysis ✓ Highway Design  
✓ Value Engineering ✓ Surveying ✓ Geotechnical investigations  
✓ Bridge Design ✓ Environmental and Social Impact Assessment  
✓ Forensic Investigation ✓ Construction claim expert



INSTITUTION OF ENGINEERS RWANDA

## TEAM

People are our most valuable asset. From the engineers to architects and from international expert to local experts, EES offers its clients a competitive team of experts passionate and driven to make the difference. More than 85% of our professionals hold university degrees in the all-relevant fields of the company activities.

EES looks with continuity at the latest learning, updating and training opportunities for a human resource, devoting with excitement and belief part of the income for the implementation of training and research program on the core business of the company.

The outcome is result-oriented experts, continuously investing in their skills to maximize the quality of the rendered services, while creating viable advanced engineering solutions that assure the client's maximum success and return on investment.

## SCOPE OF SERVICES

EES manages and implements its current and forecast engineering works with highly experienced and qualified team of employees. We have been providing advanced Engineering Solutions to our client whereby we analyse the design and recommend the most economical without compromising the quality. The various activities undertaken by the firm are divided into the following departments:

1. Highway Design
  - a. Engineering survey
  - b. Geometrical design of highway
  - c. Highway capacity analysis
  - d. Traffic analysis
  - e. Traffic studies
  - f. Bridge design/hydraulic structure design
2. Surveying
  - a. Reconnaissance survey – walk through/inventory
  - b. Establishment of ground control points
  - c. Alignment survey – exploration of alternate alignment
  - d. Engineering survey – roads, reservoirs, canal, water supply and sewerage projects
  - e. Topographical survey – collection of ground features/grid level
  - f. Catchment survey – ridge/valley contours
  - g. Cadastral survey – property lines and lane areas
  - h. Final location survey – alignment stakeout and resetting
3. Pavement Design and analysis
  - a. Traffic analysis



✓ Pavement Design, Evaluation and analysis ✓ Highway Design  
✓ Value Engineering ✓ Surveying ✓ Geotechnical investigations  
✓ Bridge Design ✓ Environmental and Social Impact Assessment  
✓ Forensic Investigation ✓ Construction claim expert

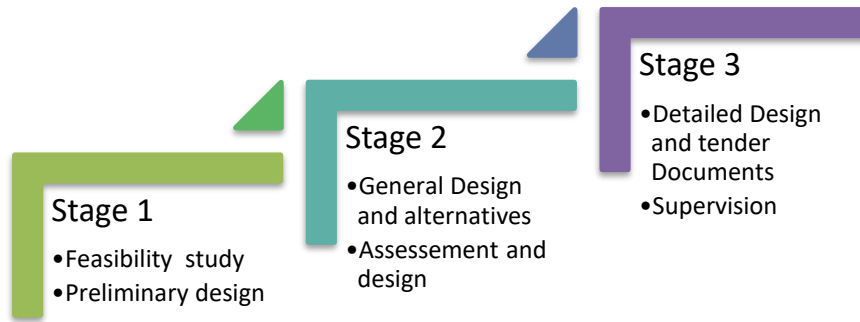
- b. Mechanistic pavement design
  - c. Pavement residual life analysis
  - d. Overlay design
  - e. DCP testing and analysis
  - f. Benkelman beam
  - g. Falling weight Deflectometer [*FWD*]
4. Forensic Investigation
    - a. Flexible pavement failure investigation
    - b. Asphalt concrete failure investigation
    - c. Pavement distress investigation
  5. Value Engineering
    - a. Critical study of the design to remove unnecessary cost
    - b. Life cycle cost analysis
    - c. Evaluation of function of the designed structure against the value
  6. Construction claim
    - a. Extension of time analysis
    - b. Retrospective and as-built schedule analysis
    - c. Quantum computation
  7. Environmental and Social Impact Assessment
  8. Geotechnical investigation
  9. Structure Engineering
    - a. Bridge Design
    - b. Building design



The execution of the projects is carried out in three major stages as shown in Figure below

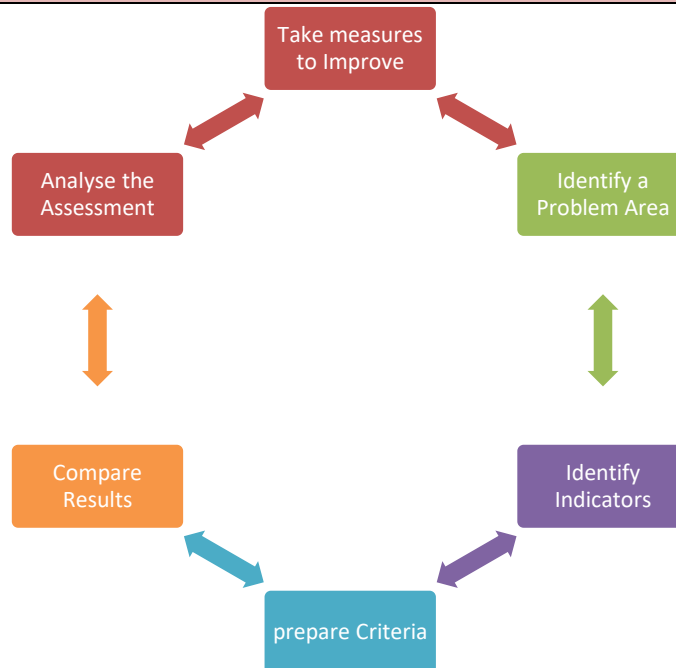


- ✓ Pavement Design, Evaluation and analysis
- ✓ Highway Design
- ✓ Value Engineering
- ✓ Surveying
- ✓ Geotechnical investigations
- ✓ Bridge Design
- ✓ Environmental and Social Impact Assessment
- ✓ Forensic Investigation
- ✓ Construction claim expert



To maintain the high standard of professional services it offers, EES employs highly qualified personnel, all members of their respective societies or institutes. There are permanent staff who are operating at the headquarter office in Kigali. EES also employs staff on *ad hoc* basis depending on the number of the projects in hand. EES strongly adheres to the engineering code of ethics and maintains an independent status.

#### QUALITY CONTROL



The EES management system is focused on quality assurance, in line with Norm EN ISO 9000. This system enables the firm to fulfil the organizational responsibilities and measures in everyday work. The quality system is constantly updated and adopted to the requirements and circumstances of the project underway.



✓ Pavement Design, Evaluation and analysis ✓ Highway Design  
✓ Value Engineering ✓ Surveying ✓ Geotechnical investigations  
✓ Bridge Design ✓ Environmental and Social Impact Assessment  
✓ Forensic Investigation ✓ Construction claim expert

The company quality management system consists of the following elements.

#### Quality assurance system managed by EES

##### A. Quality Manual

EES has a quality manual which represents the higher level of quality system documents. It determines the measures and responsibilities to be observed in each project covering study, design, technical assistance, training and other consultancy services. The manual is also used to inform the client as well as to extend the quality system to the partners of joint ventures of sub contract agreement of which member of the consortium is part.

##### B. Working procedures and instructions

They represent the second level of the documents of the quality system. On one side, they preside over the detailed planning of project services, highlighting the critical paths. On the other side, they contain the detailed description of the project management rules. In particular, they aim at achieving the expected results through proposer management of the project cycle, identifying likely risks and related hypothesis for quality assurance.

##### C. Working Instruments

At the third level of the quality system, the working instrument makes sure that requirements are satisfied; since they are carefully selected based on the objectives to be achieved and the ancillary methodologies.

#### STAFF AND ORGANIZATION STRUCTURE

The firm activity over the years has grown into multidisciplinary organisation to meet the needs of public and private clients within East Africa, focusing on project management, engineering, environmental protection, providing innovative solutions in consultancy services and training. Finding innovative solutions is a key part of all services to customers and comes not only from the strong technical base but also from the business-based approach and from the collaborative one.

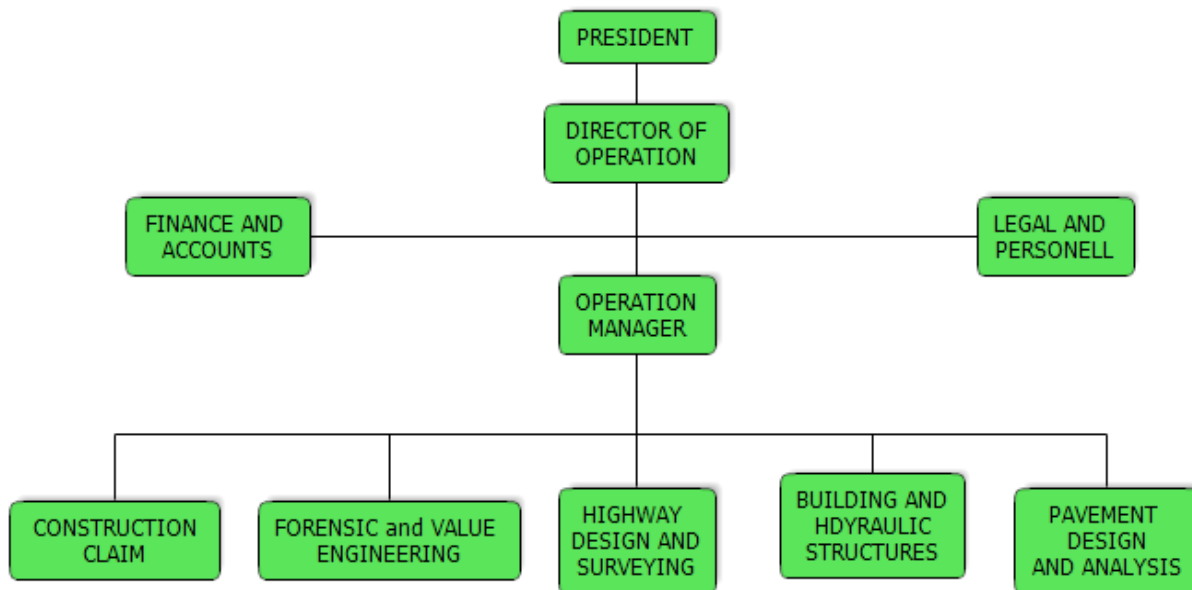
The EES provides services pertaining to consultation, investigation, preparation of economic report and technical reports, design, design review, contract administration and supervisions of civil and water works.

EES offers its clients the benefits of its advanced technological services in all facets of technical deliverables. Our long-term staffs are assigned to projects taking full account of their familiarity with the specific type of work, their experience in the region or similar areas and their previous work with other members of the team. Periods between assignments are spent in the head office or one of the regional offices to update individual technical expertise and give feedback to head office on project support.

A very important feature of EES is that all management and senior staff have lived and worked in East Africa for a substantial part of their careers. This ensures a real understanding of conditions in the field and adequate language capacities, facilitating effective relationship with project team members.



- ✓ Pavement Design, Evaluation and analysis ✓ Highway Design
- ✓ Value Engineering ✓ Surveying ✓ Geotechnical investigations
- ✓ Bridge Design ✓ Environmental and Social Impact Assessment
- ✓ Forensic Investigation ✓ Construction claim expert



### CONTACT INFORMATION

#### Extreme Engineering Solutions Limited

Nyarugenge, Kigali, RWANDA

Mobile: +250788517974

Website: [www.ees.rw](http://www.ees.rw)

Email: [info@ees.co.rw](mailto:info@ees.co.rw)

### EES COMPUTERS CAPABILITIES

To maintain a high standard of practice, **EES** utilizes a fully computerized design and project management system in addition to the automated administrative department. Up to date hardware and software computer programs have been installed in the head office which include a fully operational CAD System, CivilCAD, ArchiCAD, Prokon, Master Series, Microsoft project, Topographical Surveying software, and word processing, Spread Sheets and other Engineering and Architectural Design Software.

### SOFTWARE

#### Word Processing:

Microsoft Office 2016

(Word, Excel, PowerPoint, Publisher, Visio Professional)

#### Operating Systems:

Microsoft Windows 7, 8, 8.1, 10

**CAD:** Autodesk AutoCAD 2018 for Windows

#### Design Software:

CivilCAD (Road Design Software)

Autodesk AutoCAD Civil 3D 2018 (Road Design Software)

Geomensura 8 (Road Design Software)

ODOS 8 (Road Design Software)

Midas Gen 2018 v2.1 (Structural Analysis & Design software)

Midas Civil 2019 v1.1 (Structural Analysis & Design software)





✓ Pavement Design, Evaluation and analysis ✓ Highway Design  
✓ Value Engineering ✓ Surveying ✓ Geotechnical investigations  
✓ Bridge Design ✓ Environmental and Social Impact Assessment  
✓ Forensic Investigation ✓ Construction claim expert

Master Series 2017 (Structural Analysis & Design software)  
Prokon (Structural Analysis & Design software)

**Graphics/statistics' software:**

Minitab  
Originlab  
Sigmaplot  
MATLAB

**Software for Economic & Feasibility Studies:**

HDM-4 Model Version 2.1, which is developed by the World Road Association and which is considered as the most recent model for highway development and management.

**Planning Software:**

Microsoft Project 2019

**PROJECTS**

EES had been involved in several projects in and outside Tanzania; some of the projects are listed below.

1. Consultancy Services for Economic Study Environmental & Social Impact Assessment, Detailed Engineering Design & Preparation of Tender Document for Singida Bypass Road (46.0km) To Be Financed Through Development Roads Fund.
2. Consultancy Services for Feasibility Study, Detailed Engineering Design and Preparation of Tender Documents for Construction of Godegode Bridge (80m) And Approaches (6km) Along Mpwapwa – Makutano Jct – Pwaga Jct – Lumuma (Dom/Moro Brd), R478
3. Consultancy Services for Feasibility Study, Environmental & Social impact Assessment, Detailed Engineering Design and Preparation of Tender Documents for Construction of a Bridge and its Approach roads to Bypass Mtera Dam and the Babati town Bypass Road (15.5 km) to Bitumen Standard.
4. Consultancy Services for Feasibility Study, Environmental & Social Impact Assessment [ESIA], Detailed Engineering Design and Preparation of Tender Documents for Upgrading of Matomondo - Mlale Road (23km) in Songea District to Bitumen Standard.
5. Consulting Services for The Construction Supervision of The Rehabilitation of The Kafue Mazabuka Road (T1) In Southern Province – Lot 2
6. Consultancy Services for Planning, Detailed Engineering Design and Preparation of Bidding Documents for Pedestrian Crossings in the city of Addis Ababa
7. Feasibility, Detailed Engineering and preparation of Tender documents for upgrading of Isongole II-Kasumulu-Ipyana Regional Road, 102.94km Including Ndembo-Isoko Spur Road ,6KM



<b>Assignment name:</b> Consultancy Services for Feasibility Study, Detailed Engineering Design and Preparation of Tender Documents for Construction of Godegode Bridge (80m) And Approaches (6km) Along Mpwapwa – Makutano Jct – Pwaga Jct – Lumuma (Dom/Moro Brd), R478		<b>Approximate value of services in USD:</b> 170,000 USD
<b>Location within the Country:</b> Dodoma,		<b>Duration of Assignment:</b> 6 Months
<b>Name of the Client:</b> TANROADS		<b>Professional staff provided by your firm:</b> 3 <b>No. Staff:</b> 12  <b>No. of Staff-Months:</b> 48
<b>Address:</b> Regional Manager, Delegated TANROADS Regional Tender Board, Dodoma Region, P.O Box 902, Dodoma Telephone No. 026 2320392, Fax No. 026 2321257 E-Mail <a href="mailto:rm-dodoma@tanroads.go.tz">rm-dodoma@tanroads.go.tz</a>		
<b>Start date:</b> Jan 2020	<b>Completion Date:</b> July 2020	<b>Approx. value of the services provided by your firm under the contract:</b> 15000 USD
<b>Name of Associated Consultant, if any:</b> Advanced Engineering Solutions		<b>No of months of Professional Staff provided by the Associated Consultant:</b> -
<b>Name of Senior Staff [Project Director/Coordinator, Team Leader] involved and function performed:</b> <ol style="list-style-type: none"> <li>1. Senior Bridge Engineer – Innocent Jumo</li> <li>2. Transport Economist – David W. Nashon</li> <li>3. Hydrologist -Tumeswige Anthony</li> </ol>		
<b>Detailed Narrative Description of Project:</b> The Main objective of these consultancy services is to carry out Consultancy Services for Feasibility Study, Detailed Engineering Design and Preparation of Tender Documents for Construction of Godegode Bridge (70M) and approaches (6Km) along Mpwapwa – Makutano Jct – Pwaga Jct – Lumuma (Dom/Moro Brd), R478		
<b>Detailed Description of Actual Services provided by your staff:</b> Extreme Engineering Solutions is in charge of: <ul style="list-style-type: none"> <li>• Preparation of inception report</li> <li>• Feasibility Study including preliminary design, economic analysis and cost estimates;</li> <li>• Structural design of all drainage structures across the project road</li> <li>• Quantities Calculation and Cost Estimation</li> <li>• Preparation of Tender Documents.</li> </ul>		

Name of the Firm	Extreme Engineering Solutions
Authorized Signature	



<b>Assignment name:</b> Consultancy Services for Feasibility Study, Environmental & Social impact Assessment, Detailed Engineering Design and Preparation of Tender Documents for Construction of a Bridge and its Approach roads to Bypass Mtera Dam and the Babati town Bypass Road (15.5 km) to Bitumen Standard.		<b>Approximate value of services in USD:</b> 730,000 USD
<b>Location within the Country:</b> Babati, Manyara and the Dodoma – Iringa Border (Mtera Dam)		<b>Duration of Assignment:</b> 15 Months
<b>Name of the Client:</b> TANROADS – Headquarters		<b>Professional staff provided by your firm:</b> 3  <b>No. Staff:</b> 11  <b>No. of Staff-Months:</b> 58
<b>Address:</b> 3rd Floor, Airtel House, Ali Hassan Mwinyi/Kawawa Roads Junction, P. O. Box 11364, Dar es Salaam, Tanzania. Tel: +255 22 2926001/6 Fax: +255 22 2926011 Email: <a href="mailto:tanroadshq@tanroads.go.tz">tanroadshq@tanroads.go.tz</a>		
<b>Start date:</b> June 2019	<b>Completion Date:</b> Sept. 2020	<b>Approx. value of the services provided by your firm under the contract:</b> 30,000 USD
<b>Name of Associated Consultant, if any:</b> Advanced Engineering Solutions, Umar Munshi Associates (Pakistan)		<b>No of months of Professional Staff provided by the Associated Consultant:</b> - 3
<b>Name of Senior Staff [Project Director/Coordinator, Team Leader] involved and function performed:</b>  <ol style="list-style-type: none"> <li>1. Transport Economist – Sadia Beshir Mohammed</li> <li>2. Highway Engineer – Catherine Kairuki</li> <li>3. Bridge/Structural Engineer – Benox Mugabe</li> <li>4. Hydrologist-Tumesigwe Anthony</li> </ol>		
<b>Detailed Narrative Description of Project:</b> The Main objective of these consultancy services is to undertake Feasibility Study, Environmental & Social impact Assessment, Detailed Engineering Design and Preparation of Tender Documents for Construction of a Bridge and its Approach roads to Bypass Mtera Dam and the Babati town Bypass Road (15.5 km) to Bitumen Standard.		
<b>Detailed Description of Actual Services provided by your staff:</b> Extreme Engineering Solution is in charge of the following in the part of Babati Town Bypass: <ul style="list-style-type: none"> <li>• Preparation of inception report</li> <li>• Feasibility Study including preliminary design, economic analysis and cost estimates;</li> <li>• Structural design of all drainage structures across the project road</li> <li>• Quantities Calculation and Cost Estimation</li> <li>• Preparation of Tender Documents.</li> </ul>		

Name of the Firm	Extreme Engineering Solutions
Authorized Signature	



<b>Assignment name:</b> Consultancy Services for Economic Study Environmental & Social Impact Assessment, Detailed Engineering Design & Preparation of Tender Document for Singida Bypass Road (46.0km) To Be Financed Through Development Roads Fund.		<b>Approximate value of services in USD:</b> 164,308 USD
<b>Location within the Country:</b> Singida,		<b>Duration of Assignment:</b> 8 Months
<b>Name of the Client:</b> TANROADS		<b>Professional staff provided by your firm:</b> 3  <b>No. Staff:</b> 11  <b>No. of Staff-Months:</b> 47
<b>Address:</b> Regional Manager, Delegated TANROADS Regional Tender Board, Singida Region, P.O Box 6, Singida Telephone No. 026 2320392, Fax No. 026 2321257 E-Mail <a href="mailto:rm-singida@tanroads.go.tz">rm-singida@tanroads.go.tz</a>		
<b>Start date:</b> Jun 2020	<b>Completion Date:</b> Jan 2021	<b>Approx. value of the services provided by your firm under the contract:</b> 24,000 USD
<b>Name of Associated Consultant, if any:</b> Advanced Engineering Solutions		<b>No of months of Professional Staff provided by the Associated Consultant: -</b> 3
<b>Name of Senior Staff [Project Director/Coordinator, Team Leader] involved and function performed:</b> <ol style="list-style-type: none"> <li>1. Transport Economist – David Nashon</li> <li>2. Bridge Engineer- Benox Mugabe</li> <li>3. Hydrologist– Tumesigwe Anthony</li> </ol>		
<b>Detailed Narrative Description of Project:</b> The Main objective of these consultancy services is to carry out Economic study Environmental and social impact assessment detailed engineer design and preparation of tender documents for Singida bypass road (46.0KM)		
<b>Detailed Description of Actual Services provided by your staff:</b> Extreme Engineering Solution is in charge of: <ul style="list-style-type: none"> <li>• Preparation of inception report</li> <li>• Feasibility Study including preliminary design, economic analysis and cost estimates;</li> <li>• Structural design of all drainage structures across the project road</li> <li>• Quantities Calculation and Cost Estimation</li> <li>• Preparation of Tender Documents.</li> </ul>		

Name of the Firm	Extreme Engineering Solutions
Authorized Signature	



<b>Assignment name:</b> Consultancy Services for Feasibility Study, Environmental & Social Impact Assessment [ESIA], Detailed Engineering Design and Preparation of Tender Documents for Upgrading of Matomondo - Mlale Road (23km) in Songea District to Bitumen Standard.		<b>Approximate value of services in USD:</b> 52,115 USD
<b>Location within the Country:</b> Songea, Ruvuma		<b>Duration of Assignment:</b> 6 Months
<b>Name of the Client:</b> TARURA HQ <b>Address:</b> TARURA Headquarters, PSPF Dodoma Plaza, UDOM Road, Dodoma. P. O. Box 11042, Dodoma, Tanzania. Tel: +255 26 232 2929 Fax: +255 26 232 2929 Email: <a href="mailto:ceo@tarura.go.tz">ceo@tarura.go.tz</a>		<b>Professional staff provided by your firm:</b> 3  <b>No. Staff:</b> 11  <b>No. of Staff-Months:</b> 47
<b>Start date:</b> Jun 2020	<b>Completion Date:</b> Jan 2021	<b>Approx. value of the services provided by your firm under the contract:</b> 20,000 USD
<b>Name of Associated Consultant, if any:</b> Advanced Engineering Solutions and TEKNCON		<b>No of months of Professional Staff provided by the Associated Consultant:</b> -3
<b>Name of Senior Staff [Project Director/Coordinator, Team Leader] involved and function performed:</b> <ol style="list-style-type: none"> <li>1. Transport Economist – David Nashon</li> <li>2. Bridge Engineer- Benox Mugabe</li> <li>3. Hydrologist– Tumesigwe Anthony</li> </ol>		
<b>Detailed Narrative Description of Project:</b> The Main objective of these consultancy services is to undertake Feasibility Study, Environmental & Social Impact Assessment [ESIA], Detailed Engineering Design and Preparation of Tender Documents for Upgrading of Matomondo - Mlale Road (23km) in Songea District, in Ruvuma region to Bitumen Standard.		
<b>Detailed Description of Actual Services provided by your staff:</b> Extreme Engineering Solution is in charge of: <ul style="list-style-type: none"> <li>• Preparation of inception report</li> <li>• Feasibility Study including preliminary design, economic analysis and cost estimates;</li> <li>• Structural design of all drainage structures across the project road</li> <li>• Quantities Calculation and Cost Estimation</li> <li>• Preparation of Tender Documents.</li> </ul>		

Name of the Firm	Extreme Engineering Solutions
Authorized Signature	



<b>Assignment name:</b> Consulting Services for: Planning, Detail Engineering Design and Bidding Document Preparation of Pedestrian Crossings		<b>Approximate value of services in USD:</b> 52,115 USD
<b>Location within the Country:</b> Addis Abbaba, Ethiopia		<b>Duration of Assignment:</b> 6 Months
<b>Name of the Client:</b> AACRA		<b>Professional staff provided by your firm:</b> 3  <b>No. Staff:</b> 11  <b>No. of Staff-Months:</b> 47
<b>Address:</b> Addis Ababa City Roads Authority (AACRA), Head Office Street Address: Alexander Pushkin Square Tel: +251 11-383-12-79 P.O Box 9206 City: Addis Ababa Country: Ethiopia		
<b>Start date:</b> Nov 2020	<b>Completion Date:</b> Ongoing	<b>Approx. value of the services provided by your firm under the contract:</b> 30,308 USD
<b>Name of Associated Consultant, if any:</b> Advanced Engineering Solutions Ltd TACT Engineering Group Plc,		<b>No of months of Professional Staff provided by the Associated Consultant:</b> -3
<b>Name of Senior Staff [Project Director/Coordinator, Team Leader] involved and function performed:</b> <ol style="list-style-type: none"> <li>1. Transport Economist – David Nashon</li> <li>2. Bridge Engineer- Benox Mugabe</li> <li>3. Traffic Engineer – Grant Rugarama</li> <li>4. Architect-Dominic Ajwang</li> <li>5. Quantity surveyor-Golden Costa</li> </ol>		
<b>Detailed Narrative Description of Project:</b> Notable cases of traffic jams and accidents in Addis Ababa city attributed by shortage of the access of pedestrian crossings within both highways and railways in ACCRA associated with longer waiting time for traffic to cross most of the roads and railways have essentially necessitated Transport Systems Improvement Project (TRANSIP) to modernize and improve the transport system for Addis Ababa City. Addis Ababa TRANSIP sub components target on improving road and pedestrian’s safety interventions of selected corridors at identified locations and implementing comprehensive improvements to enhance traffic conditions and pedestrian safety.		
<b>Detailed Description of Actual Services provided by your staff:</b> Extreme Engineering Solution is in charge of: <ul style="list-style-type: none"> <li>• Preparation of inception report</li> <li>• Concept design and preparation of Architectural drawings</li> <li>• Traffic Studies</li> <li>• Feasibility Study including preliminary design, economic analysis and cost estimates;</li> <li>• Structural design of all drainage structures across the project road</li> <li>• Quantities Calculation and Cost Estimation</li> <li>• Preparation of Tender Documents.</li> </ul>		

Name of the Firm	Extreme Engineering Solutions
Authorized Signature	



<b>Assignment name:</b> Consulting Services for The Construction Supervision of The Rehabilitation of The Kafue Mazabuka Road (T1) In Southern Province – Lot 2		<b>Approximate value of services in USD:</b> 606,710 USD
<b>Location within the Country:</b> Kafue, Zambia		<b>Duration of Assignment:</b> 36 Months
<b>Name of the Client:</b> Road Development Agency <b>Address:</b> Fairley Road Plot No 33, Lusaka Zambia, The director and chief executive office, Lusaka, Zambia. Fax: 00260211253404 Email: rda.hq@roads.zm		<b>Professional staff provided by your firm:</b> 1  <b>No. Staff:</b> 7  <b>No. of Staff-Months:</b> 60
<b>Start date:</b> Mach 2020	<b>Completion Date:</b> March 2022	<b>Approx. value of the services provided by your firm under the contract:</b> 20,308 USD
<b>Name of Associated Consultant, if any:</b> Advanced Engineering Solutions Ltd TACT Engineering Group Plc, Ethio Infra Engineering PLC		<b>No of months of Professional Staff provided by the Associated Consultant:</b> 14
<b>Name of Senior Staff [Project Director/Coordinator, Team Leader] involved and function performed:</b> <ol style="list-style-type: none"> <li>1. Assistant Resident Engineer – Semma Fanta</li> <li>2. Material Technician-Mkandawire Jonathan</li> </ol>		
<b>Detailed Narrative Description of Project:</b> The project involves the supervision of T1 trunk road. The road is one of the six international trunk routes connecting Zambia with the neighboring countries of Zimbabwe, Botswana and Namibia. It thus forms an important component of the Southern Africa Development Community (SADC) 'North-South Corridor'. The route attracts trade and the transportation of international cargo and bulk commodities between the countries of Zimbabwe, Botswana, Namibia and South Africa		
<b>Detailed Description of Actual Services provided by your staff:</b> Extreme Engineering Solution is in charge of: <ul style="list-style-type: none"> <li>• Preparation and approval of Quality control and quality assurance plan</li> <li>• Bridge design review</li> <li>• Review of geometrical and profile design</li> <li>• Supervision of construction of drainage structures such as bridge, box culverts and pipe culverts</li> <li>• Review of pavement design</li> <li>• Mix design of stabilized material and cement concrete</li> <li>• Approval of all construction materials such subgrade [G7 and G15], stabilized subbase [C1], crushed base [CRR] and Marshal asphalt concrete.</li> <li>• Preparation of monthly report</li> <li>• Reviewing and approving Contractor's quality assurance plan</li> <li>• Implementation of contractor's environmental management plan</li> </ul>		

Name of the Firm	Extreme Engineering Solutions
Authorized Signature	



<b>Assignment name:</b> Consulting Services for Feasibility Study, Detailed Engineering Design and Preparation of Tender Documents for Upgrading of Isongole Ii – Kasumulu – Ipyana – Katumbasongwe Regional Road 114.67km Including Ndembo – Isoko Spur Road 6km To Bitumen Standard.		<b>Approximate value of services in USD:</b> 426,710 USD
<b>Location within the Country:</b> Songwe, Tanzania		<b>Duration of Assignment:</b> 8 Months
<b>Name of the Client:</b> TANROADS Songwe		<b>Professional staff provided by your firm:</b> 2  <b>No. Staff:</b> 10  <b>No. of Staff-Months:</b> 62
<b>Address:</b> Tanroads Songwe P.O. Box 86 Mbozi		
<b>Start date:</b> July 2021	<b>Completion Date:</b> Feb 2022	<b>Approx. value of the services provided by your firm under the contract:</b> 120,000USD
<b>Name of Associated Consultant, if any:</b> Advanced Engineering Solutions Ltd		<b>No of months of Professional Staff provided by the Associated Consultant:</b> 14
<b>Name of Senior Staff [Project Director/Coordinator, Team Leader] involved and function performed:</b> <ol style="list-style-type: none"> <li>1. Transport Economist – Sadia Mohammed</li> <li>2. Bridge Engineer-Essayas Muste</li> </ol>		
<b>Detailed Narrative Description of Project:</b> The Isongole II - Kasumulu - Ipyana -Katumbasongwe road ( <b>114.67km</b> ) section is a regional road located in Songwe region running adjacent to Tanzania/Malawi border and joining the Ileje district in Songwe region and Kyela district in Mbeya region. The road starts at Ileje (Isongole round about to Malawi border) and traverses east wards through Ibungu, Ndembo, Ngana, Kasumulu (Lubele) and villages. And Isoko Spur Road is the Regional road section located in Songwe region (6km), it starts at Ndembo Village heads north-west joining Isoko Village.		
<b>Detailed Description of Actual Services provided by your staff:</b> Extreme Engineering Solution is in charge of: <ul style="list-style-type: none"> <li>• Economic Evaluation</li> <li>• Traffic Survey and Analysis</li> <li>• Structural Analysis and design of drainage structures Across the project road</li> <li>• Preparation of the drawings</li> <li>• Quantities estimation and preparation of Tender document</li> <li>• Preparation of Design report.</li> </ul>		

Name of the Firm	Extreme Engineering Solutions
Authorized Signature	